

EOL2-1696-14XXX Series

50GHz DWDM 10Gbit/s X2 Transponder

RoHS6 Compliant

Features

- ◆ Compatible with X2 MSA Rev.2.0b
- ◆ Support of IEEE 802.3ae 10GBASE-ER at 10.3125Gbit/s
- ◆ Compliance to Fibre Channel 1200-SM-LL-L at 10.51875Gbit/s
- ◆ Available in all 50GHz C-Band Wavelengths on the DWDM ITU grid
- ◆ DWDM Rated EML Transmitter and PIN High Sensitivity Receiver
- ◆ Low Power Consumption 2.0W (typ.)
- ◆ Case Temperature Range:
Standard: -5°C - 70°C
- ◆ Laser Class 1 compliant
- ◆ Duplex SC connector
- ◆ Hot pluggable 70-pin connector with XAUI electrical interface
- ◆ Management and control via MDIO 2-wire interface
- ◆ Complaint with the EU RoHS 6 Environmental requirements



Applications

- ◆ 10G Ethernet
- ◆ 10G Fiber Channel

Ordering Information

Part No.	Data Rate	Power Budget	Interface	Temperature	DDM
EOL2-1696-14XXX ^{*(note1)}	10.51875Gbps	14dB	SC	Standard	YES

Note1: X₁ refers to DWDM wavelength definition in the following table.

X- Channel refers to the following table:

*Channel (X)	Part NO.	Frequency (THz)	Center Wavelength (nm)
200	EOL2-1696-14200	192.00	1561.42
205	EOL2-1696-14205	192.05	1561.01
210	EOL2-1696-14210	192.10	1560.61
215	EOL2-1696-14215	192.15	1560.20

DWDM X2 Series

220	EOL2-1696-14220	192.20	1559.79
225	EOL2-1696-14225	192.25	1559.39
230	EOL2-1696-14230	192.30	1558.98
235	EOL2-1696-14235	192.35	1558.58
240	EOL2-1696-14240	192.40	1558.17
245	EOL2-1696-14245	192.45	1557.77
250	EOL2-1696-14250	192.50	1557.36
255	EOL2-1696-14255	192.55	1556.96
260	EOL2-1696-14260	192.60	1556.55
265	EOL2-1696-14265	192.65	1556.15
270	EOL2-1696-14270	192.70	1555.75
275	EOL2-1696-14275	192.75	1555.34
280	EOL2-1696-14280	192.80	1554.94
285	EOL2-1696-14285	192.85	1554.54
290	EOL2-1696-14290	192.90	1554.13
295	EOL2-1696-14295	192.95	1553.73
300	EOL2-1696-14300	193.00	1553.33
305	EOL2-1696-14305	193.05	1552.93
310	EOL2-1696-14310	193.10	1552.52
315	EOL2-1696-14310	193.15	1552.12
320	EOL2-1696-14320	193.20	1551.72
325	EOL2-1696-14325	193.25	1551.32
330	EOL2-1696-14330	193.30	1550.92
335	EOL2-1696-14335	193.35	1550.52
340	EOL2-1696-14340	193.40	1550.12
345	EOL2-1696-14345	193.45	1549.72
350	EOL2-1696-14350	193.50	1549.32
355	EOL2-1696-14355	193.55	1548.91
360	EOL2-1696-14360	193.60	1548.51
365	EOL2-1696-14365	193.65	1548.11
370	EOL2-1696-14370	193.70	1547.72
375	EOL2-1696-14375	193.75	1547.32
380	EOL2-1696-14380	193.80	1546.92
385	EOL2-1696-14385	193.85	1546.52
390	EOL2-1696-14390	193.90	1546.12
395	EOL2-1696-14395	193.95	1545.72
400	EOL2-1696-14400	194.00	1545.32
405	EOL2-1696-14405	194.05	1544.92
410	EOL2-1696-14410	194.10	1544.53
415	EOL2-1696-14415	194.15	1544.13
420	EOL2-1696-14420	194.20	1543.73
425	EOL2-1696-14425	194.25	1543.33

DWDM X2 Series

430	EOL2-1696-14430	194.30	1542.94
435	EOL2-1696-14435	194.35	1542.54
440	EOL2-1696-14440	194.40	1542.14
445	EOL2-1696-14445	194.45	1541.75
450	EOL2-1696-14450	194.50	1541.35
455	EOL2-1696-14455	194.55	1540.95
460	EOL2-1696-14460	194.60	1540.56
465	EOL2-1696-14465	194.65	1540.16
470	EOL2-1696-14470	194.70	1539.77
475	EOL2-1696-14475	194.75	1539.37
480	EOL2-1696-14480	194.80	1538.98
485	EOL2-1696-14485	194.85	1538.58
490	EOL2-1696-14490	194.90	1538.19
495	EOL2-1696-14495	194.95	1537.79
500	EOL2-1696-14500	195.00	1537.40
505	EOL2-1696-14505	195.05	1537.00
510	EOL2-1696-14510	195.10	1536.61
515	EOL2-1696-14515	195.15	1536.22
520	EOL2-1696-14520	195.20	1535.82
525	EOL2-1696-14525	195.25	1535.43
530	EOL2-1696-14530	195.30	1535.04
535	EOL2-1696-14535	195.35	1534.64
540	EOL2-1696-14540	195.40	1534.25
545	EOL2-1696-14545	195.45	1533.86
550	EOL2-1696-14550	195.50	1533.47
555	EOL2-1696-14555	195.55	1533.07
560	EOL2-1696-14560	195.60	1532.68
565	EOL2-1696-14565	195.65	1532.29
570	EOL2-1696-14570	195.70	1531.90
575	EOL2-1696-14575	195.75	1531.51
580	EOL2-1696-14580	195.80	1531.12
585	EOL2-1696-14585	195.85	1530.72
590	EOL2-1696-14590	195.90	1530.33
595	EOL2-1696-14595	195.95	1529.94

*Note2: Please contact with EOPTOLINK for further information about channel whether or not it is available.

Regulatory Compliance

Feature	Standard	Performance
Electrostatic Discharge (ESD) to the Electrical Pins	MIL-STD-883G Method 3015.7	Class 1C (>1000V)

Electrostatic Discharge to the Enclosure	EN 55024:1998+A1+A2 IEC-61000-4-2 GR-1089-CORE	Compliant with standards
Electromagnetic Interference (EMI)	FCC Part 15 Class B EN55022:2006 CISPR 22B :2006 VCCI Class B	Compliant with standards Noise frequency range: 30MHz to 6GHz. Good system EMI design practice required to achieve Class B margins. System margins are dependent on customer host board and chassis design.
Immunity	EN 55024:1998+A1+A2 IEC 61000-4-3	Compliant with standards. 1KHz sine-wave, 80% AM, from 80MHz to 1GHz. No effect on transmitter/receiver performance is detectable between these limits.
Laser Eye Safety	FDA 21CFR 1040.10 and 1040.11 EN (IEC) 60825-1:2007 EN (IEC) 60825-2:2004+A1	CDRH compliant and Class I laser product. TüV Certificate No. 50135086
Component Recognition	UL and CUL EN60950-1:2006	UL file E317337 TüV Certificate No. 50135086 (CB scheme)
RoHS6	2002/95/EC 4.1&4.2 2005/747/EC 5&7&13	Compliant with standards ^{*note3}

Note3: For update of the equipments and strict control of raw materials, EOPTOLINK has the ability to supply the customized products since Jan 1, 2007, which meet the requirements of RoHS6 (Restrictions on use of certain Hazardous Substances) of European Union.

In light of item 5 in RoHS exemption list of RoHS Directive 2002/95/EC, Item 5: Lead in glass of cathode ray tubes, electronic components and fluorescent tubes.

In light of item 13 in RoHS exemption list of RoHS Directive 2005/747/EC, Item13: Lead and cadmium in optical and filter glass. The three exemptions are being concerned for Eoptolink's transceivers, because Eoptolink's transceivers use glass, which may contain Pb, for components such as lenses, windows, isolators, and other electronic components.

Description

The EOL2-1696-14XXX Series is highly integrated, serial optical transponder module for high-speed, 10Gbit/s data transmission applications. The module is fully compliant to IEEE 802.3ae standard for Ethernet, making it ideally suited for 10GbE datacom (rack to-rack, client interconnection) applications. The transponder module comprises a transmitter with DWDM cooled EML laser, a receiver with a PIN photodiode, a XAUI-Attachment Interface, an integrated Coder /Decoder and multiplexer / de-multiplexer (SERDES: Serializer/Deserializer).

The transponder operates within a wide case temperature range of -5°C to +70°C and offers

optimum heat dissipation and excellent electromagnetic shielding which enables high port densities for 10GbE systems. A 70 pin electrical connector and a duplex SC connector optical interface assure that connectivity is compliant to the X2 and XENPAK MSA.

The transmitter section uses a DWDM multiple quantum well EML laser and is a class 1 laser compliant according to International Safety Standard IEC-60825. The receiver section uses an integrated InGaAs detector preamplifier (IDP) mounted in an optical header and a limiting post-amplifier IC.

Digital diagnostic monitoring (DDM) is implemented and fully compliant with X2 DDM architecture. The unit monitors temperature, receive optical power, transmit optical power, and laser bias current.

Absolute Maximum Ratings*

Rating	Symbol	Min	Max	Units
Storage Ambient Temperature	T _s	-40	+85	°C
Powered Case Temperature	T _c	-5	+70	°C
Supply Voltage 3.3V	V _{CC3}	-0.3	4.0	V
Supply Voltage 5V	V _{CC5}	-0.5	7.0	V
Input Voltage Low Speed Signals	V _I	-0.5	3.3	V
Clamp Currents Low Speed Signals	I _{IK}	-50		mA
XAUI Input Level	V _{IXAUI}	-0.4	2.3	V
Differential XAUI Input Amplitude	V _{IDXAUI}		1000	mV
Optical Receiver Input Power	P _{Rx}		+1.5	dBm
Static Discharge Voltage			500	V

*Any stress beyond the maximum ratings can result in permanent damage permanently. The device specifications are guaranteed only under the recommended operating conditions.

Recommended Operating Conditions

Parameter	Symbol	Min	Typ	Max	Units
Operating Case Temperature Range	T _c	-5		+70	°C
Operating Humidity		8		80	%
Power Supply Voltage @ 3.3V	V _{CC3}	3.135	3.3	3.465	V
Power Supply Voltage @ 5.0V	V _{CC5}	4.75	5.00	5.25	V

Electrical Characteristics

Parameter	Symbol	Min	Typ	Max	Units
5V Supply Current	I _{VCC5}	0.38	0.7	3.5	mA
3.3V Supply Current	I _{VCC3}	310	360	576	mA

XAUI Input Characteristics ^{*Note4}

Parameter	Conditions	Symbol	Min	Typ	Max	Units
Data Rate	10GBASE-LR module			10.3125		GBd
	1200-SM-LL-L module			10.51875		GBd
	Relative Tolerance		-100		+100	ppm
Differential Input Voltage Swing	8B/10B Coded Input Signal	V _{ID}	175		2,000	mV _{P-P}
Differential Return Loss	100MHz — 2.5GHz	SDD11	10			dB
Common Mode Return Loss	100MHz — 2.5GHz	SCC11	6			dB
Total Peak-to-Peak Jitter Tolerance	Sinusoidal Jitter @ 0~20MHz	T _{JRDS}	0.32			UI
Differential Input Impedance		R _{IND}	80	100	120	Ω

Note4: XAUI-input-Lanes are ac-inputs.

XAUI Output Characteristics ^{*Note5}

Parameter	Conditions	Symbol	Min	Typ	Max	Units
XAUI Data Rate	10GBASE-LR module			10.3125		GBd
	1200-SM-LL-L module			10.51875		GBd
	XAUI Data Rate Tolerance		-100		+100	ppm
Differential Output Voltage Swing	R _{LOAD} =100 ± 5%	V _{out}	800		1,600	mV _{P-P}
Differential Output Impedance		Z _{out}	80	100	120	Ω
Differential Transition Time	20% - 80%	tr/tf	50		130	ps
Total Output Jitter					0.17	UI
Total Deterministic Output Jitter					0.08	UI

Note5: XAUI-output-Lanes are ac-outputs.

Optical Interface

Recommended Operating Conditions

Parameter	Remark	Symbol	Min	Typ	Max	Units
Input Data Rate	10GBASE-LR module	DRo		10.3125		Gbd

	1200-SM-LL-L module			10.51875		GBd
	relative tolerance	ADR/DRtyp	-100		+100	ppm

Transmitter Characteristics

(If not otherwise mentioned under recommended operating conditions and standard compliant single mode fiber.)

Characteristic	Conditions	Symbol	Min	Typ	Max	Units
Data Rate	10GBASE-LR module			10.3125		Gbps
	1200-SM-LL-L module			10.51875		Gbps
	Relative tolerance to nominal DR	ADR/DRtyp p	-100		100	ppm
SMSR		SMSR	30			dB
Optical Output Power		P _{out}	-1		3	dBm
Extinction Ratio	EOL	ER	9			dB
Optical Modulation Amplitude		OMA	500			pW
Transmitter Penalty	Bessel-Thompson Filter	TP			3	dB
Overshoot	Bessel-Thompson Filter	O _s			40	%

Receiver Characteristics ^{*Note6}

(If not otherwise mentioned under recommended operating conditions and standard compliant single mode fiber.)

Parameter	Conditions	Symbol	Min	Typ	Max	Units
Data Rate	10GBASE-LR module			10.3125		Gbps
	1200-SM-LL-L module			10.51875		Gbps
	Relative tolerance to nominal DR	ADR/DRtyp	-100		100	ppm
Receiver Sensitivity	BER 10 ⁻¹² @2 ³¹ -1	P _{min}			-15	dBm
Receiver Overload	BER 10 ⁻¹² @2 ³¹ -1	P _{overload}	-1.5			dBm
Saturation Input Power		P _{max}	0.5			dBm

Note6: The specified characteristics are met within the recommended range of operating conditions and under the default settings of output power and modulation amplitude. Changing the settings of the optical output power will affect the dynamic behavior of the output signal. Unless otherwise noted, typical data is quoted at nominal voltages and +25°C ambient temperature.

MDIO Interface

DC Characteristics

(If not otherwise mentioned under the recommended operating conditions.)

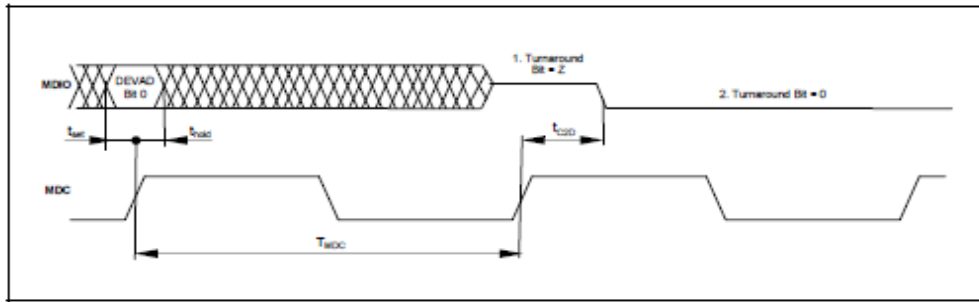
Characteristic	Condition	Symbol	Minimum	Maximum	Unit
Input high voltage		V _H	0.84	1.5	V
Input low voltage		V _L	-0.3	0.36	V
MDIO Input current	MMD Driver in tri-state	I _{MDIO}	-10	8	pA
MDC Input current		I _{MDC}	-5	5	pA

Output low voltage	IOL = 100pA	VQL	-0.3		V
	IOL = 4mA	VQL		0.2	V
Output high voltage	RPULL-Up = 357Ω ±1% VPULL-Up = 1.14~1.5V	VQH	1.136	1.5	V
Output low current	VI = 0.2V	IQL	+4		mA
MDIO Input capacitance	VI = 0~1.5V	Cin		10	pF

AC Characteristics

If not otherwise mentioned under the recommended operating conditions. Furthermore it's recommended that clock period time TMDC is not less than 310ns and the sum of input currents of loads on the bus does not exceed 256pA at high and at low not below -320pA.

Characteristic	Condition	Symbol	Minimum	Maximum	Unit
Set Up Time		tset		10	ns
Hold Time		t _{hold}		10	ns
Clock to Data Time	RPULL-Up = 357Ω ±1%, CBUS ≤ 470pF	t _{C2D}	0	300	ns



Example Timing Diagram: Turnover Timing at Read Cycle

Electro Static Discharge (ESD)

The maximum electrostatic charge based on a human body model and the conditions as outlined below is:

Parameter	Conditions	Symbol	Min	Typ	Max	Units
Static Discharge Voltage	MIL STD 883 Method				500	V

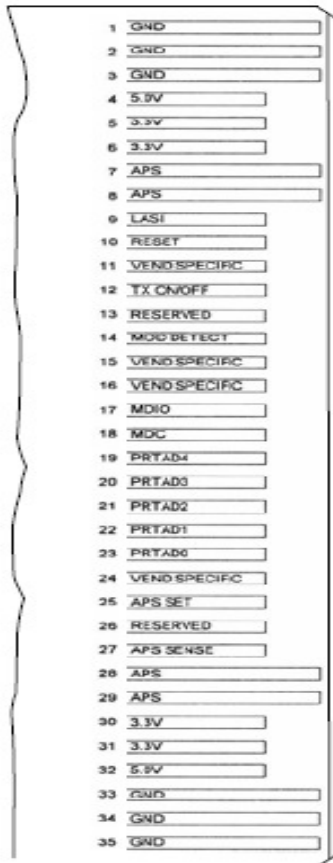
Thermal Management

The transponder is designed for an operation within a case temperature range between -5 to +70°C at an altitude of < 3km. The built in heatsink provides an optimized thermal performance. The user needs to guarantee per system design not to exceed this temperature range. It has to be considered that in case of usage of multiple modules on a single hostboard that there is a temperature rise among the modules hosted side by side (see figure below). Airflow direction and air speed needs to be chosen accordingly. For further information it is referred to the MSA document.

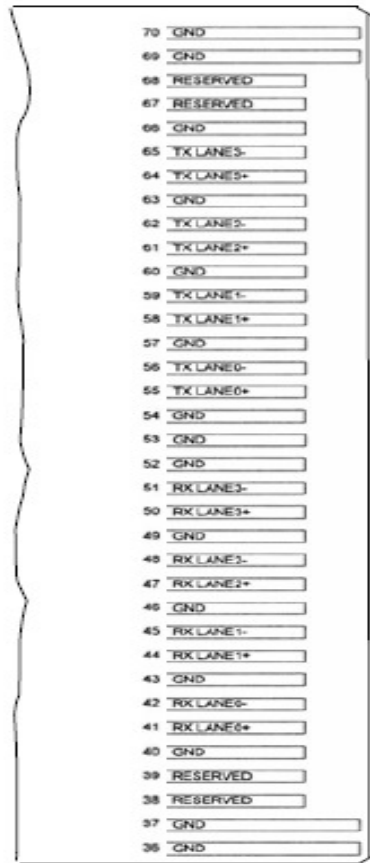
DDM Monitoring Specification

Parameter	Range	Accuracy	Calibration
Temperature	-10 to +80°C	± 3°C	Internal
Bias Current	0 to 100mA	±10%	Internal
TX Power	0 to +4dBm	± 3dB	Internal
RX Power	-16 to -0.5dBm	± 3dB	Internal

Card-Edge-Connector-Pinning and Layout



Top view -Top side of PCB



Top view-Bottom side of PCB

Electrical Pin Definition

Symbol	Logic	PIN	Name/Description	Note
3.3V		5, 6, 30, 31	Power Supply of Optical Receiver and Transmitter and Control Circuits	2
5.0V		4, 32	Power Supply of Optical Receiver Frontend	2
APS		7, 8, 28, 29	Adaptive Power Supply, Supply of	2

DWDM X2 Series

			PHY XS and PCS Layer Devices	
APS SENSE		27	APS Sense Output for APS Control Circuit	
APS SET		25	Feedback Input for APS, Input of APS Setting Resistor	
GND		1, 2, 3, 33,34, 35, 36, 37, 40, 43,46, 49, 52, 53, 54, 57,60, 63, 66, 69, 70	Common Electrical Ground	1
LASI	1.2V CMOS Open Drain Output	9	Link Alarm Status Interrupt, low active, Open Drain Output Supposed to operate with 10KΩ - 22KΩ pull upon host. Logic High: Normal Operation Logic Low: Link Alarm is indicated	
MDC		18	Management Clock Input	3
MDIO		17	Management Data IO	3
MOD DETECT		14	1kΩ to Ground for APS Circuit Environment	
PRTADO	1.2V CMOS Input	23	Port Address Bit 0 (Low = 0), internally pulled up by 18kΩ	
PRTAD1	1.2V CMOS Input	22	Port Address Bit 1 (Low = 0), internally pulled up by 18kΩ	
PRTAD2	1.2V CMOS Input	21	Port Address Bit 2 (Low = 0), internally pulled up by 18kΩ	
PRTAD3	1.2V CMOS Input	20	Port Address Bit 3 (Low = 0), internally pulled up by 18kΩ	
PRTAD4	1.2V CMOS Input	19	Port Address Bit 4 (Low = 0), internally pulled up by 18kΩ	
RESERVED		13, 38, 39, 67, 68	Reserved by MSA, internally not connected	
RESERVED		26	Reserved for Avalanche Photodiode use, internally not connected	5
RESET	1.2V CMOS Input	10	Low active Reset Input 10KΩ pull-up on Transceiver Logic high = Normal Operation Logic Low = Reset asserted	

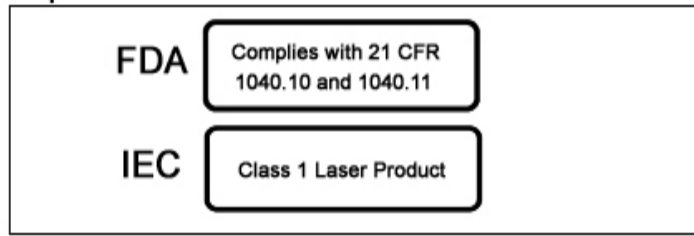
TX ON/OFF	1.2V CMOS Input	12	High active Transmitter Enable Input 10K Ω pull-up on Transceiver Logic high = Transmitter active (normal Operation) And Register Bit 1.9.0 set to low as well Logic Low = shut down of Transmitter	
VENDSPECIFIC		11, 15, 16, 24	Vendor Specific Pin,. for proper operation leave unconnected	5
RX LANE0+		41	Module XAUI Output Lane 0+	4
RX LANE0-		42	Module XAUI Output Lane 0-	4
RXLANE1+		44	Module XAUI Output Lane 1+	4
RXLANE1-		45	Module XAUI Output Lane 1-	4
RX LANE2+		47	Module XAUI Output Lane 2+	4
RX LANE2-		48	Module XAUI Output Lane 2-	4
RX LANE3+		50	Module XAUI Output Lane 3+	4
RX LANE3-		51	Module XAUI Output Lane 3-	4
TX LANE0+		55	Module XAUI Input Lane 0+	4
TX LANE0-		56	Module XAUI Input Lane 0-	4
TXLANE1+		58	Module XAUI Input Lane 1+	4
TXLANE1-		59	Module XAUI Input Lane 1-	4
TX LANE2+		61	Module XAUI Input Lane 2+	4
TX LANE2-		62	Module XAUI Input Lane 2-	4
TX LANE3+		64	Module XAUI Input Lane 3+	4
TX LANE3-		65	Module XAUI Input Lane 3-	4

- 1) Ground connections are common for TX and RX.
- 2) Each connector contact is rated at 0.5A.
- 3) MDIO and MDC timing must comply with IEEE 802.3ae clause 45.3.
- 4) XAUI output characteristics comply with IEEE 802.3ae clause 47.
- 5) Transceivers will be MSA compliant when no signals are present on the vendor specific pins.

Eye Safety

This laser based multimode transceiver is a Class **1** product. It complies with IEC 60825-1: 2007 and FDA performance standards for laser products (21 CFR 1040.10 and 1040.11) except for deviations pursuant to Laser Notice 50, dated June 24, 2007.

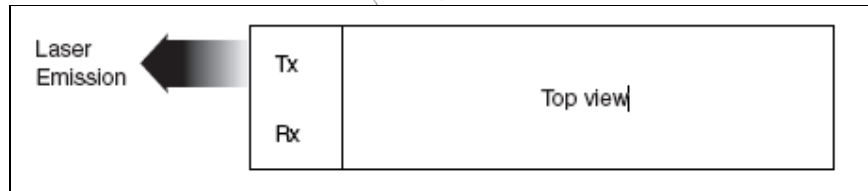
Class 1 Labels



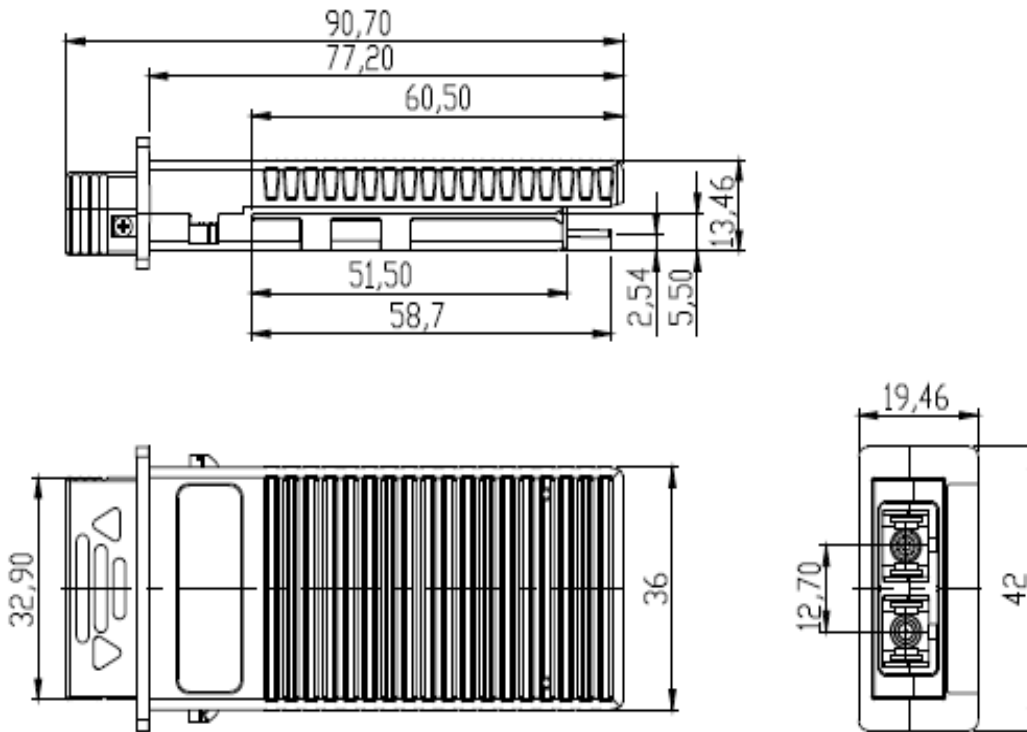
Laser Emission Data

Wavelength	>1525nm
Total output power (as defined by IEC: 7mm aperture at 70mm distance)	15.6mW
Beam divergence	14°

Laser Emission



Mechanical Drawing



Obtaining Document

You can visit our website: <http://www.eoptolink.com>

Or contact Eoptolink Technology Inc., Ltd. listed at the end of the documentation to get the latest documents.

Revision History

Revision	Initiated	Reviewed	Approved	Revision History	Release Date
V1.a	Kelly Cao			Released.	May 27, 2011

Notice:

Eoptolink reserves the right to make changes to or discontinue any optical link product or service identified in this publication, without notice, in order to improve design and/or performance. Applications that are described herein for any of the optical link products are for illustrative purposes only. Eoptolink makes no representation or warranty that such applications will be suitable for the specified use without further testing or modification.

Contact:

Add: Floor 5, Building 2, No. 21 Gaopeng Avenue, High-Tech District, CHENGDU, SICHUAN
610041 P.R. CHINA

Tel: (+86) 028-85122709 ext 816 & 809

Fax: (+86) 028-85121912

Postal: 610041

E-mail: sales@eoptolink.com

<http://www.eoptolink.com>

Eoptolink